

Rockfon® Traditions™ Ceiling System

Applications

Ideal for applications such as restaurants, night clubs, hotels, casinos, lobby areas, retail stores, and private residences.

Features & Benefits

- Range of patterns to suit varied designs.
- Bare chromium treated steel (suitable for painting) for superior aesthetics and corrosion resistance.
- 2' x 2' or 2' x 4' Lay-in panels designed for use with standard 15/16" T-bar grid allow for full plenum accessibility.
- 2' x 4' Nail-up panels are available for ceiling and/or wall applications. Nail-up panels are installed onto furring strips.
- Perimeter angles, cornices, and accessories are available for a complete, authentic installation.

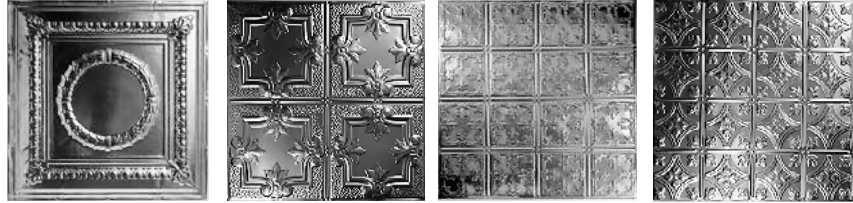
Components:

1. Panels:

- 2' x 2'
- 2' x 4'

2. Panel Type:

- Lay-in
- Nail-up

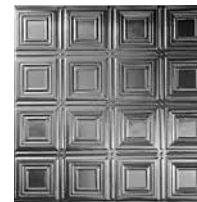
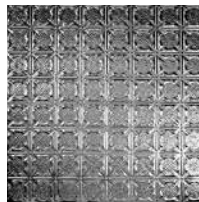


0

1

2

3

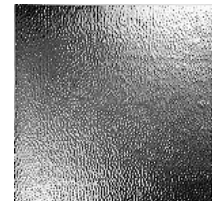
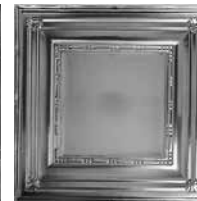
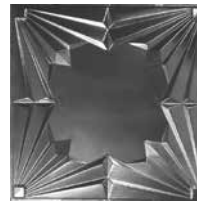


4

5

6

7

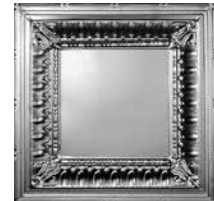
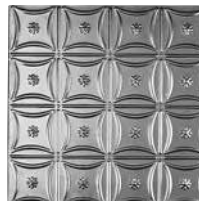


8

9

10

000 Standard Filler Panel Available in 2'x 4' only



21

23

26

36

Standard Painted Colors

- 01 White
- 08 Black
- 44 Satin Silver

Premium Painted Colors and Finishes

- Color Number _____
- Color Description _____

800.323.7164 / Fax: 800.222.3744 / rockfon.com

M

Rockfon® Traditions™ Ceiling System

Rockfon® Traditions™ Ceiling System

Profiles



Flat Lay-In Panel

(2' x 2' or 2' x 4')
use with standard 15/16" T-bar
grid for full plenum accessibility
(hold down clips or gypsum
lay-in panel required)

2. Cornices:

Cornices need to be field bent to achieve the projections shown below. Recommended for nail-up panel ceiling installations only.



63.40.020 (2" Projection) > Convex Face



63.40.035 (3 1/2" Projection) > Convex Face



63.40.050 (4" Projection) > Concave Face



63.40.063 (6 1/4" Projection) > Concave Face



63.40.015 Girder Nosing Pattern



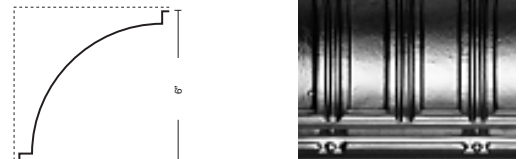
63.40.030 (3" Projection) > Straight Face



63.40.040 (4" Projection) > Concave Face



63.40.060 (6" Projection) > Concave Face



63.40.075

ROXUL
Rockfon®



ROCKFON, LLC 4849 SOUTH AUSTIN AVE., CHICAGO, IL 60638 / USA and Canada: 800-323-7164 / Fax: 800-222-3744 / rockfon.com